

MELODY OF NATURAL STONE...

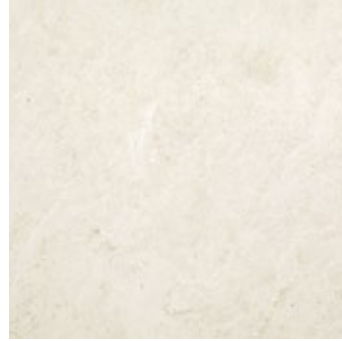




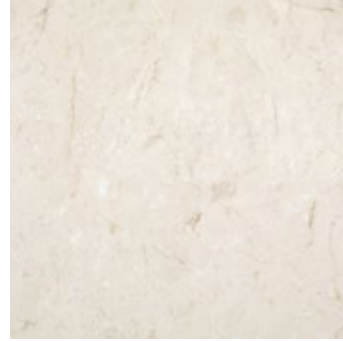
[www.aytasakinmermer.com](http://www.aytasakinmermer.com)



Burdur Beige - Moonstone Cream / Cream



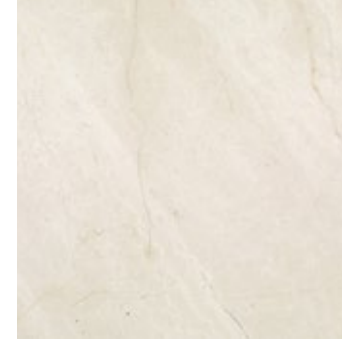
Burdur Beige - Moonstone Cream / Angelica



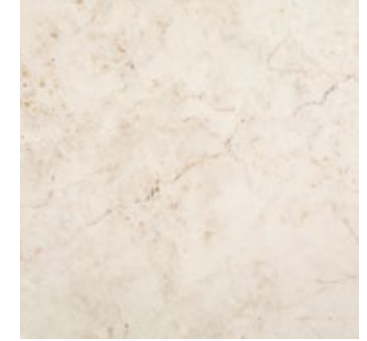
Burdur Beige - Moonstone Cream / Rhapsody



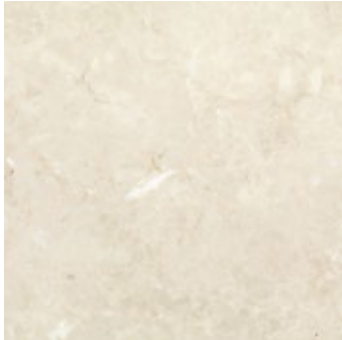
Burdur Beige - Moonstone Cream / Light



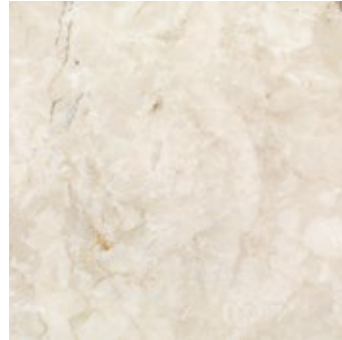
Burdur Beige - Moonstone Cream / Classic



Burdur Beige - Moonstone Cream / Antique



Burdur Beige - Moonstone Ivory



Burdur Beige - Moonstone Ivory / CAP



Burdur Grey - Moonstone Fantasy



Burdur Grey - Moonstone Silver



Burdur Grey - Moonstone Silver / HR



Burdur Grey - Marino Grey / Cross Cut



Burdur Grey - Marino Grey / Vein Cut



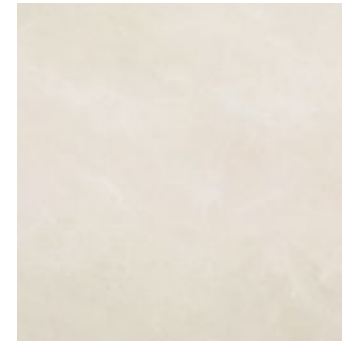
Burdur Grey - Marino Grey HR / Cross Cut



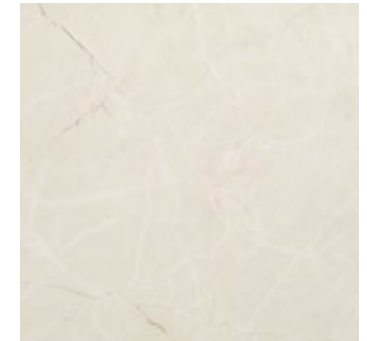
Burdur Grey - Marino Grey HR / Vein Cut



Burdur Beige - Dream Beige



Burdur Beige - Crema Vega



Burdur Beige - Crema Vega / HR



## HAKKIMIZDA

Aytaş Akin 1994 yılında Ercan Akin tarafından Burdur'da kurulmuş, tekstilde ihracata dayalı üretim ile faaliyete geçmiştir. Bu sektörde uzun yıllar dünyanın moda merkezi Paris'e ihracat yapılmıştır. Firma mermer sektörüne ise 2004 yılı başlarında ilk ocağını (Moonstone Cream) açarak giriş yapmıştır. 2005 yılında son teknoloji makinelerle donatılmış fabrikasını faaliyete geçirerek yatırımlarına devam etmiştir. Şimdi ise on sekiz farklı ürün, dört farklı ocak ile blok, plaka ve ebatlı ürün üretimi yapmaktadır.

Sektöre giriş yapıldığı günden bu yana Burdur Beji üzerine yoğunlaşıp konusunda ihtisas yaparak uzmanlaşmış ve kısa zamanda bölge bazında en iyi firmalar arasında yerini almıştır. Yaklaşık 30 farklı ülkeye aylık ortalama 80 ila 100 konteyner işlenmiş Burdur Beji ihraç eder hale gelmiştir.

## İHRACAT YAPTIĞIMIZ ÜLKELER

Çin, Hindistan, Suudi Arabistan, Birleşik Arap Emirlikleri, Güney Kore, İsrail, Libya, Lübnan, Singapur, Irak, Japonya, Porto Riko, Mısır, Filistin, İrlanda, Brezilya, Rusya, Çeçenistan, Azerbaycan, Amerika Birleşik Devletleri, İngiltere, Yemen, Ukrayna, Türkmenistan, KKTC, Filistin, Güney Kore, Avustralya, Ekvador.

## ABOUT US

*Aytaş Akin was established by Ercan Akin in 1994 in Burdur and had gone into operation with manufacturing based on exportation in textile sector. The company exported to Paris, fashion centre of the world, for many years in that sector. Aytaş Akin has entered marble sector at the beginning of 2004 by opening its first quarry (Moonstone Cream). It has continued its investments by opening a factory equipped with highest technology machines in 2005. Currently the company is producing blocks, slabs, and cut to size materials from its four different quarries, with eighteen different products.*

*It has specialized in its field by concentrating on Burdur Beige marble since the day entered to the sector and it has taken place amongst the best companies on regional basis in a short time. Now it is exporting between 80 to 100 containers of finished Burdur Beige per month to nearly 30 different countries*

## COUNTRIES WE EXPORT

*China, India, Saudi Arabia, UAE, South Korea, Israel, Libya, Lebanon, Singapore, Iraq, Japan, Puerto Rico, Egypt, Palestine, Ireland, Brazil, Russia, Chechnya, Azerbaijan, USA, England, Yemen, Ukraine, Turkmenistan, KKTC, Palestine, South Korea, Australia, Ecuador.*



*the pastoral symphony*



BURDUR BEIGE - MOONSTONE CREAM / CREAM



Open your heart





BURDUR BEIGE - MOONSTONE CREAM / ANGELICA



*Why does it feel so good*





BURDUR BEIGE - MOONSTONE CREAM / RHAPSODY



*shape of my heart*





BURDUR BEIGE - MOONSTONE CREAM / LIGHT

*5th symphony*





BURDUR BEIGE - MOONSTONE CREAM / CLASSIC



*Ain't no cure for love*





BURDUR BEIGE - MOONSTONE CREAM / ANTIQUE



*Knockin' on Heaven's Door*





BURDUR BEIGE - MOONSTONE IVORY



*You can win if you want !*



BURDUR BEIGE - MOONSTONE IVORY / CAP



*sweet dreams*



BURDUR GREY - MOONSTONE FANTASY



*Where's the party?...*



BURDUR GREY - MOONSTONE SILVER



AYTAŞ AKIN  
MARBLE

*Lets talk about love...*







BURDUR GREY - MOONSTONE SILVER / HR



*Always on My Mind*





BURDUR GREY - MARINO GREY / CROSS CUT

*strangers in the night...*





BURDUR GREY - MARINO GREY / VEIN CUT



*lonely shepherd*



BURDUR GREY - MARINO GREY HR / CROSS CUT

*The show must go on...*







BURDUR GREY - MARINO GREY HR / VEIN CUT

*Man in the mirror...*





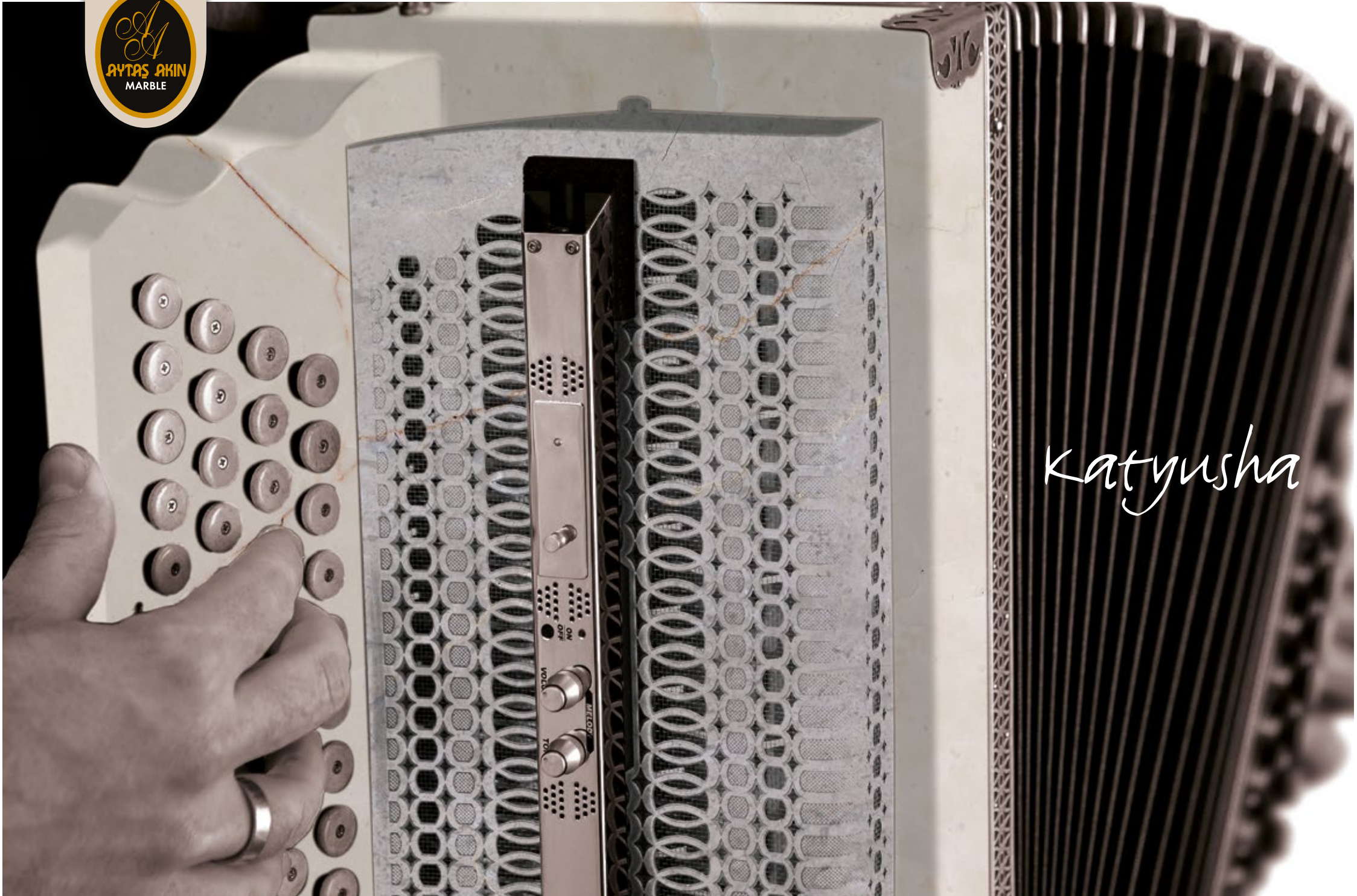
BURDUR BEIGE - DREAM BEIGE



True Love Will Never Fade...



BURDUR BEIGE - CREMA VEGA 



*Katyusha*



BURDUR BEIGE - CREMA VEGA / HR



New  
Product



38









Moonstone Fantasy, Moonstone Silver, Marino Grey



40



Crema Vega

New  
Quarry



## FABRİKAMIZ

30,000m<sup>2</sup> arsada yaklaşık 12.000m<sup>2</sup> kapalı alana sahip fabrikamızda 8 katrak, 2 adet plaka silim hattı ve 6 este, 3 adet ebatlı silim hattı ile aylık 55.000m<sup>2</sup> ila 60.000m<sup>2</sup> arası Burdur Beji üretim kapasitesine sahibiz. Ürünlerimizin %100'ünü kendi ocaklarımızdan sağladığımız hammadde ile üretmekteyiz.

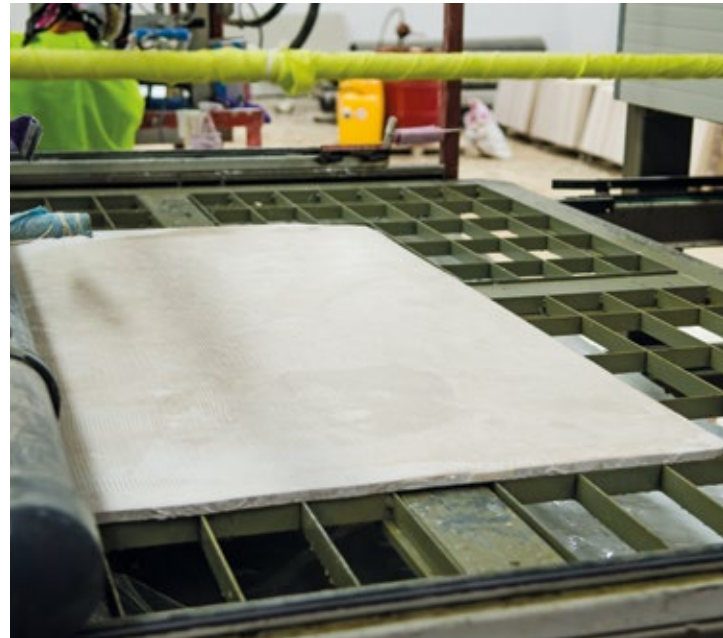
Zengin imkanlar ve ileri teknoloji donanımına sahip makinelerimizle ürettiğimiz yüksek kalite ürünlerimizi müşterilerimizin hizmetine sunmaktayız. Müşteri memnuniyeti şirketimizi başarıya götüren en önemli unsurlardan birisidir.

## OUR FACTORY

*We have the capacity to produce between 55,000m<sup>2</sup> and 60,000m<sup>2</sup> Burdur Beige per month with 8 gangsaws, 2 slab polishing lines and 6 block cutters, 3 cut to size polishing lines in our factory which has settled in approximately 12.000m<sup>2</sup> closed area covered by total 30,000m<sup>2</sup> terrain. We have been manufacturing 100% of our products with the raw materials obtained from our own quarries.*

*We produce our high quality goods with the machines which have rich facilities and high technology features and put them into service of our customers. Customer satisfaction is the most important factor that assisted our company reach success.*







44







46







A Hotel in Makkah - Saudi Arabia



Saudi Arabia

**REFERANSLARIMIZ / REFERENCES**



A Hotel in Makkah - Saudi Arabia



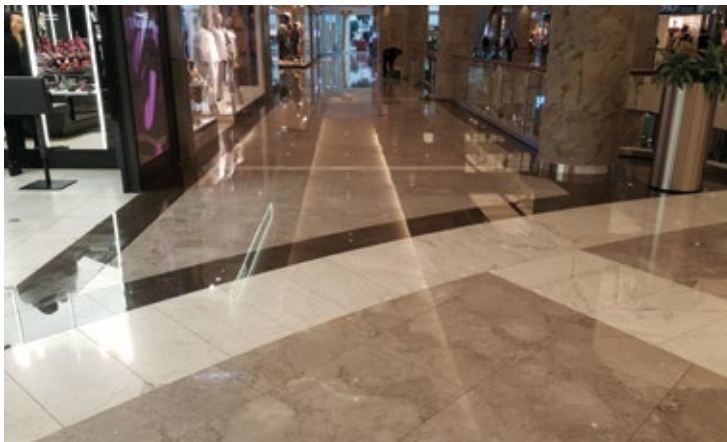
A Hotel in Makkah - Saudi Arabia



Saudi Arabia



A Hotel in Makkah - Saudi Arabia



İstinye Park - İstanbul / Turkey



İstinye Park - İstanbul / Turkey



İstinye Park - İstanbul / Turkey

**REFERANSLARIMIZ / REFERENCES**



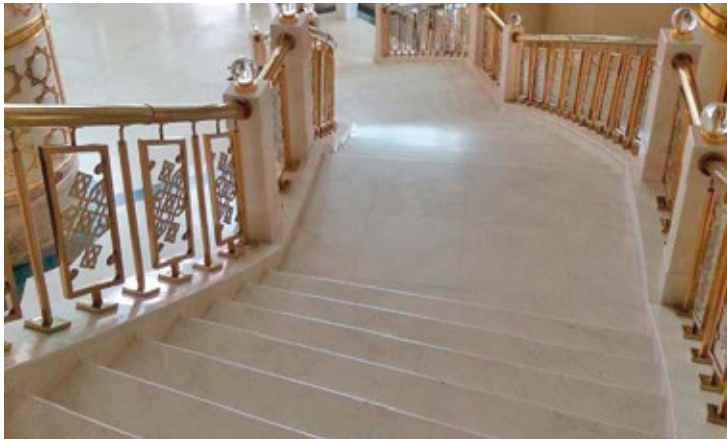
Ashgabat Olympics Hotel - Turkmenistan



Saudi Arabia



Ashgabat Olympics Hotel - Turkmenistan



Ashgabat Olympics Hotel - Turkmenistan



The Citadel - Dubai



Private Villa in Dubai



Rixos The Palm - Dubai



Rixos The Palm - Dubai



Rixos The Palm - Dubai

# FİZİKSEL VE MEKANİK ÖZELLİKLER / PHYSICAL AND MECHANICAL PROPERTIES

		MOONSTONE CREAM	MOONSTONE IVORY	DREAM BEIGE	MARINO GREY	MOONSTONE SILVER	MOONSTONE FANTASY
Hardness	Mohs	4	4-4.5	4.5	4.5	4.5	4.5
Bulk Specific Gravity (TS 699)		2.674 ± 0.007	2.696 ± 0.003	2.738 ± 0.012	2.702 ± 0.005	2.702 ± 0.005	2.702 ± 0.005
Dry / Saturated	g/cm <sup>3</sup>	2.679 ± 0.005	2.699 ± 0.003	2.758 ± 0.008	2.704 ± 0.004	2.704 ± 0.004	2.704 ± 0.004
Density	g/cm <sup>3</sup>	2,715	2.739	2.826	2,756	2,756	2,756
Water Abs. At Atmospheric Pressure (TS EN 13755)							
by wolume	%	2.738 ± 0.012	2.738 ± 0.012	1.969 ± 0.498	2.738 ± 0.012	2.738 ± 0.012	2.738 ± 0.012
by weight	%	2.758 ± 0.008	2.758 ± 0.008	0.720 ± 0.185	2.758 ± 0.008	2.758 ± 0.008	2.758 ± 0.008
Effective Porosity (TS EN 8615)	%	0.401	0.333	1.969	0.213	0.213	0.213
Real Porosity (TS EN 8615 )	%	1.51	1.56	3.12	1.98	1.98	1.98
Fullness Ratio (TS 699)	%	98.49	98.44	96.88	98.02	98.02	98.02
Compressive Strength TSE EN 1926	kg/cm <sup>2</sup>	1418.4 ± 202.5	1038.4 ± 86.7	1027.1 ± 162.2	990.4 ± 128.5	990.4 ± 128.5	990.4 ± 128.5
Compressive Strength After Freezing - Thawing (12 cycles) TS EN 12371"	kg/cm <sup>2</sup>	1239,2 ± 169.7	1025,1 ± 243,8	993,48 ± 156,1	884,3 ± 146,9	884,3 ± 146,9	884,3 ± 146,9
Changing of compressive strength (-)	%	12.93	1.29	3.28	10.70	10.70	10.70
Decreasing of weight after Freezing	%	0,0759	0,01	0,028	0,015	0,015	0,015
Flexural Strength Under Concentrated Load (TS EN 12372)"	kg/cm <sup>2</sup>	91.77 ± 20,39	93.33 ± 31.2	137.8 ± 59.77	142.25 ± 40.8	142.25 ± 40.8	142.25 ± 40.8
Flexural Strength Under Concentrated Moment (TS EN 13161)"	kg/cm <sup>2</sup>	95.58 ± 21.22	65.9 ± 41.4	100.47 ± 23.26	89.25 ± 34.48	89.25 ± 34.48	89.25 ± 34.48
Stregth to Blow (TS 699)	kg.cm/cm <sup>3</sup>	10.0 ± 6.53	8.8 ± 4.6	5.14 ± 3.6	4.6 ± 1.9	4.6 ± 1.9	4.6 ± 1.9
Abrasion Strength (Method-B / Bohme ) ( TS EN 14157 )	cm <sup>3</sup> /50cm <sup>2</sup>	14.16 ± 3.79	11.65 ± 0.55	8.46 ± 0.85	13.13 ± 0.58	13.13 ± 0.58	13.13 ± 0.58
Water Absorption by Capilarity	g/m <sup>2</sup> s0,5	17717,00	41763,00	10.00	32203,00	32203,00	32203,00
P-Wave Velocity	m/s	—————	6552 ± 81	6209 ± 165	6699 ± 69	6699 ± 69	6699 ± 69



**AYTAŞ AKIN MERMER SAN. ve TİC. A.Ş.**

Organize Sanayi Bölgesi Milli Egemenlik Caddesi No: 137 Burdur / Türkiye  
Phone: +90 (248) 252 96 00 - 01 - 02 • Fax: +90 (248) 252 99 98  
e-mail: info@aytasakinmermer.com

[www.aytasakinmermer.com](http://www.aytasakinmermer.com)